

# ROTTLER

## THE CUTTING EDGE

### ABOUT THE NEWSLETTER

You are reading the very first issue of the Rottler Quarterly newsletter. Each quarter we will be gathering news pertaining to Rottler. The Newsletter will focus on one headline topic as well as include new developments, brochures, information on machines, and events.

### ROTTLER UNIPILOT TOOLING

**Unipilot**  
ROTTLER TOOLING

*The speed of live and  
the accuracy of fixed*

Rottler has released a new tooling system for the Rottler Seat & Guide machines.

Rottler's new patent pending UNIPILOT TOOLING system allows the carbide centralizing UNIPILOT to work like a live pilot – stays in the spindle while moving from valve guide to guide – but at the same time has a fixed pilot design to give improved CONCEN.

For more information ask your local Rottler representative or [Click Here](#) to download the new SG9 brochure which includes specs on the UNIPILOT tooling!

### ROTTLER ON YOUTUBE

Now you can view Rottler Machines, like the latest P55 Porting Machine, online! There are 28 videos spanning from the SG9 to the F99Y, and we're adding more each week.

Check it out for yourself at:  
[www.youtube.com/rottermfg](http://www.youtube.com/rottermfg)

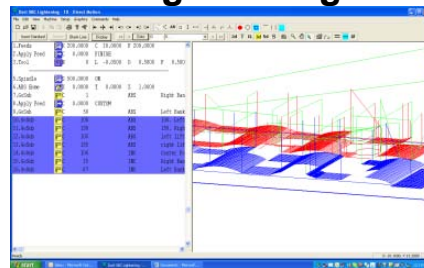
## Rottler CAD/CAM software

Are you using your F60 or F90 machine to its full potential?  
**Market with Engraving!**

If you own either a Rottler F60 or F90 boring machine, or both series of machines- you either have or are considering the purchase of Rottler CAD/CAM (or DM) software. Whether you do or do not currently operate the software, there may be opportunities that you are missing out on. One of these features is the machines ability to engrave.

Rottler's CAD/CAM software allows the end user to quickly and easily perform engraving instructions. You can use this feature to help market your business by engraving your company name, website, or contact information on components that go out to your customers. Whether you are building 1 or 20 motors per month your company can gain a lot of exposure if you provided the information where everyone could see it. For example, you can market your business on the valve covers. With each motor you build, consider all the people looking under the hood. This is a great and inexpensive way to enhance your product marketing. When your customer comes in first place, everyone will know who built the motor.

### Programming



**Software capable of programming simple 2D parts as well as complex 3D surfacing.**

### Rottler Control



**Extremely user friendly.  
Basic programming learned in days.**

## NEW

### Rottler F90M Series

At the 2008 PRI Show Rottler announced the introduction of the new manual version of the F90 machines – F97M, F98M, and F99M.

Contact your local Rottler representative or call Rottler directly for more information.

## UPCOMING EVENTS

### V-Twin Expo

February 7-9, 2009 - Booth 2417  
Cincinnati, OH

### Dealer Expo

February 13-16, 2009 - Booth 3231  
Indianapolis, IN

## LET US CALL YOU!

Did you know you can contact departments at Rottler via email through our website? Try out the links below and have us call you!

- [Technical Support](#)
- [Sales Department](#)
- [Parts Department](#)

## USEFUL LINKS

- [Rottler Website](#)
- [Rottler YouTube](#)
- [P55 Porting Machine](#)
- [New SG9 Brochure](#)

The format of the control has been designed for users who have little to no CNC experience. The software is extremely user friendly with a quick learning curve; You can expect to be cutting with Rottler CAD/CAM within the first day of instruction. The software will allow you to effortlessly create programs such as pocketing, peck drilling, boring, rigid tapping, circular interpolation, engraving, and bolt hole patterns. Rottler CAD/CAM will not only expand block machining, it will allow you to use your machine for industrial applications, it can also be used for surfacing applications.

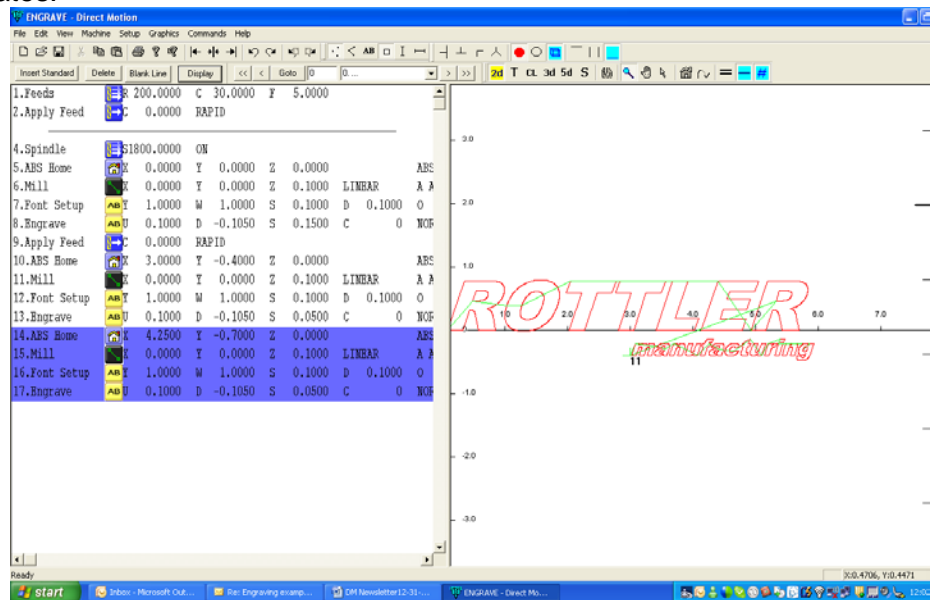
## How We Can Help!

Rottler provides training classes that will introduce you to engraving, as well as basic programming skills that will increase shop capabilities and profitability. Classes can be taught remotely (with internet access) or hands-on depending on the learning style you prefer.

Please feel free to contact Mark Fickel, our Rottler CAD/CAM software authority, for more information on training and pricing, which varies by training method, and number of attendees: [mark@rottermfg.com](mailto:mark@rottermfg.com)

## See for yourself!

Below is a very simple program that can be created in less than five minutes after training. This will create an engraving of "Rottler Manufacturing" on a valve cover with one of Rottler's F60 series machines. Once your work piece's origin and tool length has been defined you simply hit the cycle start button and you will be cutting. The graphics below represent a simulation of what will be cutting. The red represents the cutting feed rate and the green lines represent rapid feed rates.



This is a photo of the final product. Total program time was 5 minutes. Total setup time was 10 minutes. Total run time was 10 minutes.

