



UNIPILOT Carbide Centralizing Pilot Catalog



Unipilot.
ROTTLER TOOLING

Rottler Manufacturing ~ 8029 South 200th Street ~ Kent, Washington 98032 USA
Tel: 253-872-7050 Fax: 253-395-0230
www.rottermfg.com



Rottler UNIPILOT Solid Carbide Centralizing Pilots

are manufactured from fine grain, sintered tungsten carbide and are ground to a very high degree of accuracy, straightness, and surface finish. They are designed for a lifetime of precision machining.

Pilot Diameter

The straight/parallel part of the pilot that fits in to the valve guide is referred to as the pilot diameter. Rottler pilots are available in 0.01mm (0.0004") increments. For best results, the clearance between the pilot and valve guide should not be more than 0.01mm (0.0004")

Most new valve guides are manufactured to a **nominal size** and the valve stem diameters are manufactured to be smaller than the nominal size to allow clearance for heat expansion of the valve stem when the engine is operating. For example: a 7mm valve guide has an internal diameter of exactly 7.00mm (.2756") The valve stem diameter of the intake valve is 6.98mm (.2748") and the exhaust is 6.96mm (.2740"). In order for the pilot to fit most of the valve guides, the first choice could be UCP0699 to give .01mm (0.0004") clearance. If the valve guide is used and has some wear, then the second choice of pilot could be UCP0700 (0.2756").

Shank Diameter

The part of the pilot that fits inside the tool holder is referred to as the shank. Rottler offers three different shank sizes (6.00mm, 9.52mm, and 20.00mm). For longest tool life and best seat cutting results, the shank needs to go as far as possible inside the tool holder when cutting valve seats or boring out valve seat housings.

Extended Length (EL) Pilots

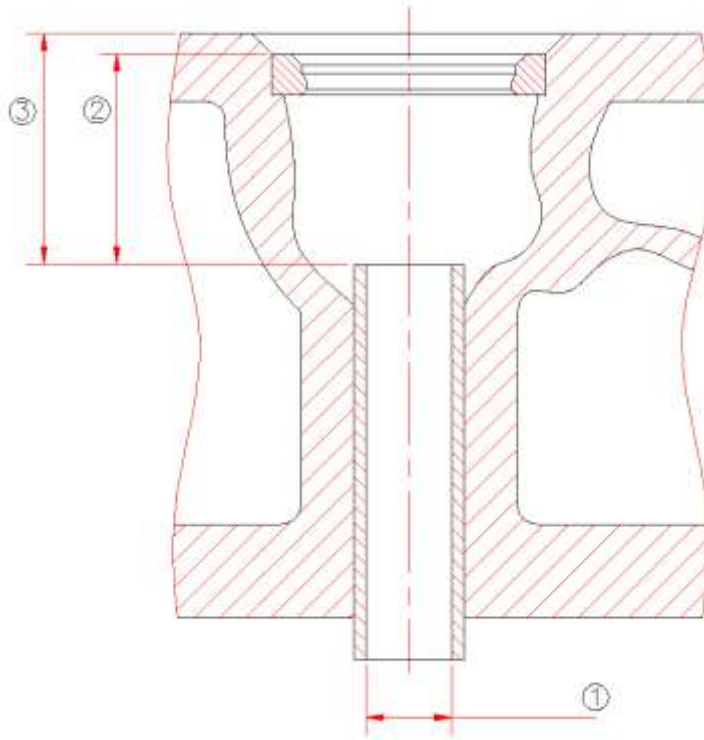
Some cylinder heads require extended length pilots because the distance from the top of the valve guide to the head gasket surface is longer than normal. Normally this distance is about 1.0" - 1.5", it is when this distance becomes greater that extended length pilots are needed. The pilots are extended by adding material below the shank and above the tapered section of the pilot.

If you think you need an extended length pilot, please see the order form in the back of the catalog and contact Rottler for ordering assistance.



**PILOT DIAMETER SHOULD ALWAYS BE GREATER THAN
VALVE STEM DIAMETER FOR BEST CONCENTRICITY**

Below is a picture that shows the only measurements you need to consider when selecting a pilot.



- 1 – Guide Internal Diameter
- 2 – Distance from Top of Guide to Top of Seat
- 3 – Distance from Top of Guide to Top of Gasket Surface

Reading Rottler Part Numbers:

UCPM0000 has a pilot diameter of 00.00mm and shank diameter of 6.00mm (.236"). **Pilots that have part numbers beginning with UCPM are for SG7 and SG8 machines ONLY!**

UCP0000 has a pilot diameter of 00.00mm and shank diameter of 9.52mm (.375")

UCP0000EL0 has a pilot diameter of 00.00mm, shank diameter of 9.52mm (.375"), and overall length of 0"

UCP0000EL0020 has a pilot diameter of .000", shank diameter of 20.00mm (.7874"), and an overall length of 00"

Modular Carbide Centralizing Pilot System for Valve Guides Over 0.875" (22.23mm)

Rottler also offers a modular carbide centralizing pilot system for very large engine applications. This system is versatile because it allows you to use different size sleeves, which are adjustable for different lengths, for different applications while using only one pilot. These sleeves are MADE TO ORDER. Contact Rottler for more information and ordering assistance.



- FCM20EL380** Modular Carbide Centralizing Pilot for Valve Guides Over 0.875" (22.23mm). Requires a set of Interchangeable Sleeves (FCMSLXXX & FCMSUXXX) - 20mmShank Pilot
- FCMSUXXX** Modular Pilot Upper (Tapered) Sleeve - Hardened and Heat Treated - For .XXX" (XX.XXmm) Guide ID
- FCMSLXXX** Modular Pilot Lower (Straight) Sleeve - Hardened and Heat Treated - For .XXX" (XX.XXmm Guide ID - 3.0" Overall Length



6.00mm (.236)" Shank Diameter Carbide Centralizing Pilots for SG7 & SG8 MACHINES ONLY			
Part #	Millimeters (00.00mm)	Inches (.0000")	Notes
UCPM0397	3.97	0.1563	
UCPM0398	3.98	0.1567	
UCPM0399	3.99	0.1571	
UCPM0400	4.00	0.1575	
UCPM0434	4.34	0.1709	
UCPM0444	4.44	0.1748	
UCPM0445	4.45	0.1752	
UCPM0447	4.47	0.1760	
UCPM0448	4.48	0.1764	
UCPM0449	4.49	0.1768	
UCPM0450	4.50	0.1772	
UCPM0451	4.51	0.1776	
UCPM0495	4.95	0.1949	
UCPM0496	4.96	0.1953	
UCPM0497	4.97	0.1957	
UCPM0498	4.98	0.1961	
UCPM0499	4.99	0.1965	
UCPM0500	5.00	0.1969	
UCPM0501	5.01	0.1972	
UCPM0502	5.02	0.1976	
UCPM0541	5.41	0.2130	
UCPM0543	5.43	0.2138	
UCPM0544	5.44	0.2142	
UCPM0545	5.45	0.2146	
UCPM0546	5.46	0.2150	
UCPM0547	5.47	0.2154	
UCPM0548	5.48	0.2157	
UCPM0549	5.49	0.2161	
UCPM0550	5.50	0.2165	
UCPM0551	5.51	0.2169	
UCPM0552	5.52	0.2173	
UCPM0555	5.55	0.2185	
UCPM0556	5.56	0.2189	
UCPM0562	5.62	0.2213	
UCPM0592	5.92	0.2331	
UCPM0593	5.93	0.2335	
UCPM0594	5.94	0.2339	



6.00mm (.236)" Shank Diameter Carbide Centralizing Pilots for SG7 & SG8 MACHINES ONLY			
Part #	Millimeters (00.00mm)	Inches (.0000")	Notes
UCPM0595	5.95	0.2343	
UCPM0596	5.96	0.2346	
UCPM0597	5.97	0.2350	
UCPM0598	5.98	0.2354	
UCPM0599	5.99	0.2358	
UCPM0600	6.00	0.2362	
UCPM0601	6.01	0.2366	
UCPM0602	6.02	0.2370	
UCPM0604	6.04	0.2378	
UCPM0605	6.05	0.2382	
UCPM0639	6.39	0.2516	
UCPM0649	6.49	0.2555	
UCPM0651	6.51	0.2563	
UCPM0658	6.58	0.2591	
UCPM0659	6.59	0.2594	
UCPM0660	6.60	0.2598	
UCPM0661	6.61	0.2602	
UCPM0697	6.97	0.2744	
UCPM0699	6.97	0.2744	
UCPM0700	7.00	0.2756	
UCPM0701	7.01	0.2760	
UCPM0714	7.14	0.2811	



9.52MM (.375") Shank Diameter UNIPILOT Carbide Centralizing Pilots			
Part #	Millimeters (00.00mm)	Inches (.0000")	Notes
UCP0445	4.45	0.1752	
UCP0449	4.49	0.1768	
UCP0450	4.50	0.1772	
UCP0494	4.94	0.1945	
UCP0497	4.97	0.1957	
UCP0498	4.98	0.1961	
UCP0499	4.99	0.1965	
UCP0500	5.00	0.1969	
UCP0501	5.01	0.1972	
UCP0544	5.44	0.2142	
UCP0546	5.46	0.2150	
UCP0547	5.47	0.2154	
UCP0548	5.48	0.2157	
UCP0549	5.49	0.2161	
UCP0550	5.50	0.2165	
UCP0551	5.51	0.2169	
UCP0552	5.52	0.2173	
UCP0556	5.56	0.2189	
UCP0559	5.59	0.2201	
UCP0591	5.91	0.2327	
UCP0592	5.92	0.2331	
UCP0594	5.94	0.2339	
UCP0595	5.95	0.2343	
UCP0596	5.96	0.2346	
UCP0597	5.97	0.2350	
UCP0598	5.98	0.2354	CAT C4.4
UCP0599	5.99	0.2358	CAT C6.6
UCP0600	6.00	0.2362	
UCP0601	6.01	0.2366	CAT C6.6
UCP0602	6.02	0.2370	
UCP0603	6.03	0.2374	
UCP0604	6.04	0.2378	
UCP0605	6.05	0.2382	
UCP0606	6.06	0.2386	
UCP0613	6.13	0.2413	
UCP0627	6.27	0.2469	
UCP0630	6.30	0.2480	



9.52MM (.375") Shank Diameter UNIPILOT Carbide Centralizing Pilots			
Part #	Millimeters (00.00mm)	Inches (.0000")	Notes
UCP0634	6.34	0.2496	
UCP0635	6.35	0.2500	
UCP0636	6.36	0.2504	
UCP0637	6.37	0.2508	
UCP0640	6.40	0.2520	
UCP0644	6.44	0.2535	
UCP0646	6.46	0.2543	
UCP0649	6.49	0.2555	
UCP0650	6.50	0.2559	
UCP0651	6.51	0.2563	
UCP0653	6.53	0.2571	
UCP0654	6.54	0.2575	
UCP0655	6.55	0.2579	
UCP0656	6.56	0.2583	
UCP0657	6.57	0.2587	
UCP0658	6.58	0.2591	
UCP0659	6.59	0.2594	
UCP0660	6.60	0.2598	
UCP0661	6.61	0.2602	
UCP0662	6.62	0.2606	
UCP0688	6.88	0.2709	
UCP0691	6.91	0.2720	
UCP0692	6.92	0.2724	
UCP0693	6.91	0.2720	
UCP0694	6.94	0.2732	
UCP0695	6.95	0.2736	
UCP0696	6.96	0.2740	
UCP0697	6.97	0.2744	
UCP0698	6.98	0.2748	
UCP0699	6.99	0.2752	
UCP0700	7.00	0.2756	
UCP0701	7.01	0.2760	
UCP0702	7.02	0.2764	
UCP0703	7.03	0.2768	
UCP0704	7.04	0.2772	
UCP0705	7.05	0.2776	
UCP0706	7.06	0.2780	
UCP0707	7.07	0.2783	



9.52MM (.375") Shank Diameter UNIPILOT Carbide Centralizing Pilots			
Part #	Millimeters (00.00mm)	Inches (.0000")	Notes
UCP0708	7.08	0.2787	
UCP0709	7.09	0.2791	
UCP0710	7.10	0.2795	
UCP0711	7.11	0.2799	
UCP0712	7.12	0.2803	
UCP0713	7.13	0.2807	
UCP0714	7.14	0.2811	
UCP0715	7.15	0.2815	
UCP0716	7.16	0.2819	
UCP0719	7.19	0.2831	
UCP0720	7.20	0.2835	
UCP0721	7.21	0.2839	
UCP0722	7.22	0.2843	
UCP0724	7.24	0.2850	
UCP0725	7.25	0.2854	
UCP0734	7.34	0.2890	
UCP0742	7.42	0.2921	
UCP0743	7.43	0.2925	
UCP0750	7.50	0.2953	
UCP0777	7.77	0.3059	
UCP0785	7.85	0.3091	
UCP0786	7.86	0.3094	
UCP0787	7.87	0.3098	
UCP0788	7.88	0.3102	
UCP0789	7.89	0.3106	
UCP0790	7.90	0.3110	
UCP0791	7.91	0.3114	
UCP0792	7.92	0.3118	
UCP0793	7.93	0.3122	
UCP0794	7.94	0.3126	
UCP0795	7.95	0.3130	
UCP0796	7.96	0.3134	
UCP0797	7.97	0.3138	
UCP0798	7.98	0.3142	
UCP0799	7.99	0.3146	
UCP0800	8.00	0.3150	
UCP0801	8.01	0.3154	
UCP0802	8.02	0.3157	



9.52MM (.375") Shank Diameter UNIPILOT Carbide Centralizing Pilots			
Part #	Millimeters (00.00mm)	Inches (.0000")	Notes
UCP0803	8.03	0.3161	
UCP0804	8.04	0.3165	
UCP0805	8.05	0.3169	
UCP0806	8.06	0.3173	CAT. 3064/66
UCP0807	8.07	0.3177	CAT. 3064/66
UCP0808	8.08	0.3181	CAT. 3100
UCP0809	8.09	0.3185	CAT. 3100
UCP0811	8.11	0.3193	CAT. 3100
UCP0820	8.20	0.3228	
UCP0822	8.22	0.3236	
UCP0825	8.25	0.3248	
UCP0826	8.26	0.3252	
UCP0828	8.28	0.3260	
UCP0829	8.29	0.3264	
UCP0830	8.30	0.3268	
UCP0831	8.31	0.3272	
UCP0832	8.32	0.3276	
UCP0833	8.33	0.3280	
UCP0834	8.34	0.3283	
UCP0835	8.35	0.3287	
UCP0836	8.36	0.3291	
UCP0837	8.37	0.3295	
UCP0838	8.38	0.3299	
UCP0842	8.42	0.3315	
UCP0845	8.45	0.3327	
UCP0846	8.46	0.3331	
UCP0847	8.47	0.3335	
UCP0848	8.48	0.3339	
UCP0849	8.49	0.3343	
UCP0850	8.50	0.3346	
UCP0851	8.51	0.3350	
UCP0856	8.56	0.3370	
UCP0858	8.58	0.3378	
UCP0859	8.59	0.3382	
UCP0860	8.60	0.3386	
UCP0864	8.64	0.3402	
UCP0865	8.65	0.3406	
UCP0866	8.66	0.3409	



9.52MM (.375") Shank Diameter UNIPILOT Carbide Centralizing Pilots			
Part #	Millimeters (00.00mm)	Inches (.0000")	Notes
UCP0867	8.67	0.3413	
UCP0868	8.68	0.3417	
UCP0869	8.69	0.3421	
UCP0870	8.70	0.3425	
UCP0871	8.71	0.3429	CUINS SERIES B/C
UCP0872	8.72	0.3433	
UCP0873	8.73	0.3437	CUINS SERIES B/C
UCP0874	8.74	0.3441	CUINS SERIES B/C
UCP0875	8.75	0.3445	
UCP0876	8.76	0.3449	
UCP0877	8.77	0.3453	
UCP0878	8.78	0.3457	
UCP0879	8.79	0.3461	
UCP0880	8.80	0.3465	
UCP0881	8.81	0.3469	
UCP0885	8.85	0.3484	
UCP0891	8.91	0.3508	
UCP0892	8.92	0.3512	
UCP0894	8.94	0.3520	
UCP0895	8.95	0.3524	
UCP0896	8.96	0.3528	
UCP0897	8.97	0.3531	
UCP0898	8.98	0.3535	
UCP0899	8.99	0.3539	
UCP0900	9.00	0.3543	CAT 3054
UCP0901	9.01	0.3547	CAT 3054
UCP0902	9.02	0.3551	CAT 3054
UCP0904	9.04	0.3559	
UCP0905	9.05	0.3563	
UCP0906	9.06	0.3567	
UCP0907	9.07	0.3571	
UCP0908	9.08	0.3575	
UCP0909	9.09	0.3579	
UCP0910	9.10	0.3583	
UCP0911	9.11	0.3587	
UCP0912	9.12	0.3591	
UCP0932	9.32	0.3669	
UCP0935	9.35	0.3681	



9.52MM (.375") Shank Diameter UNIPILOT Carbide Centralizing Pilots			
Part #	Millimeters (00.00mm)	Inches (.0000")	Notes
UCP0936	9.36	0.3685	
UCP0937	9.37	0.3689	
UCP0941	9.41	0.3705	
UCP0942	9.42	0.3709	
UCP0943	9.43	0.3713	
UCP0944	9.44	0.3717	
UCP0945	9.45	0.3720	
UCP0946	9.46	0.3724	
UCP0947	9.47	0.3728	MACK E7-E6
UCP0948	9.48	0.3732	CAT. 3300
UCP0949	9.49	0.3736	CAT 3400
UCP0950	9.50	0.3740	CAT 3500
UCP0951	9.51	0.3744	CAT 3200
UCP0952	9.52	0.3748	CAT C7-C15
UCP0953	9.53	0.3752	CAT C15-C18
UCP0954	9.54	0.3756	
UCP0955	9.55	0.3760	CAT C18-C32
UCP0956	9.56	0.3764	CAT C18-C32
UCP0957	9.57	0.3768	
UCP0958	9.58	0.3772	
UCP0959	9.59	0.3776	
UCP0960	9.60	0.3780	
UCP0961	9.61	0.3783	
UCP0963	9.63	0.3791	
UCP0964	9.64	0.3795	
UCP0965	9.65	0.3799	
UCP0966	9.66	0.3803	
UCP0967	9.67	0.3807	
UCP0968	9.68	0.3811	
UCP0969	9.69	0.3815	
UCP0973	9.73	0.3831	
UCP0974	9.74	0.3835	
UCP0978	9.78	0.3850	
UCP0979	9.79	0.3854	
UCP0980	9.80	0.3858	
UCP0983	9.83	0.3870	
UCP0984	9.84	0.3874	
UCP0985	9.85	0.3878	



9.52MM (.375") Shank Diameter UNIPILOT Carbide Centralizing Pilots			
Part #	Millimeters (00.00mm)	Inches (.0000")	Notes
UCP0986	9.86	0.3882	
UCP0987	9.87	0.3886	
UCP0988	9.88	0.3890	
UCP0989	9.89	0.3894	
UCP0990	9.90	0.3898	
UCP0991	9.91	0.3902	
UCP0992	9.92	0.3906	
UCP0993	9.93	0.3909	
UCP0994	9.94	0.3913	
UCP0995	9.95	0.3917	
UCP0996	9.96	0.3921	
UCP0997	9.97	0.3925	
UCP0998	9.98	0.3929	
UCP0999	9.99	0.3933	
UCP1000	10.00	0.3937	
UCP1001	10.01	0.3941	
UCP1002	10.02	0.3945	
UCP1004	10.04	0.3953	
UCP1005	10.05	0.3957	
UCP1006	10.06	0.3961	
UCP1008	10.08	0.3969	
UCP1016	10.16	0.4000	
UCP1020	10.20	0.4016	
UCP1021	10.21	0.4020	
UCP1024	10.24	0.4031	
UCP1025	10.25	0.4035	
UCP1026	10.26	0.4039	
UCP1027	10.27	0.4043	
UCP1028	10.28	0.4047	CAT 3126E
UCP1029	10.29	0.4051	
UCP1030	10.30	0.4055	CAT 3126E
UCP1033	10.33	0.4067	CAT 3126E
UCP1051	10.51	0.4138	
UCP1054	10.54	0.4150	
UCP1090	10.90	0.4291	
UCP1092	10.92	0.4299	
UCP1093	10.93	0.4303	
UCP1094	10.94	0.4307	



9.52MM (.375") Shank Diameter UNIPILOT Carbide Centralizing Pilots			
Part #	Millimeters (00.00mm)	Inches (.0000")	Notes
UCP1095	10.95	0.4311	
UCP1096	10.96	0.4315	
UCP1097	10.97	0.4319	
UCP1098	10.98	0.4323	
UCP1099	10.99	0.4327	
UCP1100	11.00	0.4331	
UCP1101	11.01	0.4335	
UCP1102	11.02	0.4339	
UCP1103	11.03	0.4343	
UCP1104	11.04	0.4346	
UCP1105	11.05	0.4350	
UCP1106	11.06	0.4354	
UCP1107	11.07	0.4358	
UCP1108	11.08	0.4362	
UCP1109	11.09	0.4366	
UCP1110	11.10	0.4370	
UCP1111	11.11	0.4374	
UCP1114	11.14	0.4386	
UCP1116	11.16	0.4394	
UCP1119	11.19	0.4406	
UCP1120	11.20	0.4409	
UCP1123	11.23	0.4421	
UCP1130	11.30	0.4449	
UCP1132	11.32	0.4457	
UCP1140	11.40	0.4488	
UCP1143	11.43	0.4500	
UCP1144	11.44	0.4504	
UCP1145	11.45	0.4508	
UCP1146	11.46	0.4512	
UCP1147	11.47	0.4516	CUINS B/C
UCP1148	11.48	0.4520	
UCP1149	11.49	0.4524	CUINS B/C
UCP1150	11.50	0.4528	
UCP1151	11.51	0.4531	
UCP1168	11.68	0.4598	
UCP1186	11.86	0.4669	
UCP1187	11.87	0.4673	
UCP1188	11.88	0.4677	



9.52MM (.375") Shank Diameter UNIPILOT Carbide Centralizing Pilots			
Part #	Millimeters (00.00mm)	Inches (.0000")	Notes
UCP1189	11.89	0.4681	
UCP1195	11.95	0.4705	
UCP1196	11.96	0.4709	
UCP1197	11.97	0.4713	
UCP1198	11.98	0.4717	
UCP1199	11.99	0.4720	
UCP1200	12.00	0.4724	
UCP1201	12.01	0.4728	
UCP1202	12.02	0.4732	
UCP1204	12.04	0.4740	
UCP1206	12.06	0.4748	
UCP1239	12.39	0.4878	
UCP1242	12.42	0.4890	
UCP1250	12.50	0.4921	
UCP1251	12.51	0.4925	
UCP1252	12.52	0.4929	
UCP1260	12.60	0.4961	
UCP1261	12.61	0.4965	
UCP1262	12.62	0.4969	
UCP1263	12.63	0.4972	
UCP1264	12.64	0.4976	
UCP1265	12.65	0.4980	
UCP1266	12.66	0.4984	
UCP1267	12.67	0.4988	
UCP1268	12.68	0.4992	
UCP1269	12.69	0.4996	
UCP1270	12.70	0.5000	
UCP1271	12.71	0.5004	
UCP1273	12.73	0.5012	
UCP1274	12.74	0.5016	
UCP1299	12.99	0.5114	
UCP1300	13.00	0.5118	
UCP1397	13.97	0.5500	
UCP1398	13.98	0.5504	
UCP1422	14.22	0.5598	
UCP1425	14.25	0.5610	
UCP1425	14.25	0.5610	
UCP1426	14.26	0.5614	



9.52MM (.375") Shank Diameter UNIPILOT Carbide Centralizing Pilots			
Part #	Millimeters (00.00mm)	Inches (.0000")	Notes
UCP1431	14.31	0.5634	
UCP1435	14.35	0.5650	
UCP1587	15.87	0.6248	
UCP1903	19.03	0.7492	

9.52MM (.375") Shank Diameter UNIPILOT Carbide Centralizing Pilots EL (extended length)			
Part #	Millimeters (00.00mm)	Inches (.0000")	Notes
UCP0792EL9	7.92	0.3118	
UCP0793EL9	7.93	0.3122	
UCP0794EL9	7.94	0.3126	
UCP0795EL9	7.95	0.3130	
UCP0796EL9	7.96	0.3134	
UCP0798EL9	7.98	0.3142	
UCP0799EL9	7.99	0.3146	
UCP0800EL9	8.00	0.3150	
UCP0801EL9	8.01	0.3154	
UCP0802EL9	8.02	0.3157	
UCP0868EL9	8.68	0.3417	
UCP0870EL9	8.70	0.3425	
UCP0871EL9	8.71	0.3429	
UCP0874EL9	8.74	0.3441	
UCP0875EL9	8.75	0.3445	
UCP0876EL9	8.76	0.3449	Detroit 60 Series
UCP0877EL9	8.77	0.3453	Detroit 60 Series
UCP0878EL9	8.78	0.3457	Detroit 60 Series
UCP0897EL9	8.97	0.3531	
UCP0898EL9	8.98	0.3535	
UCP0900EL9	9.00	0.3543	
UCP0901EL9	9.01	0.3547	
UCP0902EL9	9.02	0.3551	
UCP0925EL9	9.25	0.3642	Waukesha
UCP0926EL9	9.26	0.3646	Waukesha
UCP0945EL9	9.45	0.3720	
UCP0946EL9	9.46	0.3724	CAT 3500 Intake



9.52MM (.375") Shank Diameter UNIPILOT Carbide Centralizing Pilots EL (extended length)			
Part #	Millimeters (00.00mm)	Inches (.0000")	Notes
UCP0947EL9	9.47	0.3728	CAT 3500 Intake
UCP0948EL9	9.48	0.3732	CAT 3500 Intake
UCP0949EL9	9.49	0.3736	CAT 3500
UCP0950EL9	9.50	0.3740	CAT 3500 Intake
UCP0951EL9	9.51	0.3744	CAT 3500 Intake
UCP0952EL9	9.52	0.3748	CAT 3500 Intake
UCP0959EL9	9.59	0.3776	
UCP0960EL9	9.60	0.3780	
UCP0961EL9	9.61	0.3783	
UCP0999EL9	9.99	0.3933	
UCP1000EL9	10.00	0.3937	
UCP1026EL9	10.26	0.4039	
UCP1027EL9	10.27	0.4043	
UCP1028EL9	10.28	0.4047	
UCP1099EL9	10.99	0.4327	
UCP1100EL9	11.00	0.4331	
UCP1101EL9	11.01	0.4335	
UCP1102EL12	11.02	0.4339	
UCP1102EL9	11.02	0.4339	
UCP1103EL9	11.03	0.4343	
UCP1110EL9	11.10	0.4370	
UCP1111-9EL	11.11	0.4374	
UCP1112-9EL	11.12	0.4378	
UCP1120EL9	11.20	0.4409	
UCP1130EL9	11.30	0.4449	
UCP1148EL9	11.48	0.4520	
UCP1149EL9	11.49	0.4524	
UCP1198EL9	11.98	0.4717	
UCP1199EL9	11.99	0.4720	
UCP1200EL9	12.00	0.4724	
UCP1201EL9	12.01	0.4728	
UCP1249EL12	12.49	0.4917	
UCP1260EL9	12.60	0.4961	CAT 3500 Exhaust
UCP1261EL9	12.61	0.4965	CAT 3500 Exhaust
UCP1262EL12	12.62	0.4969	
UCP1262EL9	12.62	0.4969	
UCP1264EL9	12.64	0.4976	



9.52MM (.375") Shank Diameter UNIPILOT Carbide Centralizing Pilots EL (extended length)			
Part #	Millimeters (00.00mm)	Inches (.0000")	Notes
UCP1266EL9	12.66	0.4984	
UCP1268EL12	12.68	0.4992	CAT D342-D353
UCP1269EL9	12.69	0.4996	CAT D342-D353
UCP1270EL12	12.70	0.5000	CAT D8/D9/342-353
UCP1298EL9	12.98	0.5110	
UCP1299EL9	12.99	0.5114	
UCP1300EL9	13.00	0.5118	
UCP1301EL9	13.01	0.5122	
UCP1401EL12	14.01	0.5516	
UCP1422EL12	14.22	0.5598	
UCP1423EL12	14.23	0.5602	
UCP1425EL12	14.25	0.5610	
UCP1427EL9	14.27	0.5618	
UCP1429EL9	14.29	0.5626	
UCP624EL12	15.85	0.6240	
UCP1588EL12	15.88	0.6252	



20.00MM (.787") Shank Diameter UNIPILOT Carbide Centralizing Pilots			
Part #	Millimeters (00.00mm)	Inches (.0000")	Notes
UCP434EL1220	11.04	0.4346	Waukesha VGF
UCP435EL1220	11.05	0.4350	Waukesha VGF
UCP1249E1220	12.49	0.4917	
UCP499EL1220	12.69	0.4996	Waukesha 1197
UCP500EL1220	12.70	0.5000	Waukesha 1197
UCP560EL1220	14.22	0.5598	Waukesha VHP7042 - GL7042 -3711
UCP1424EL1220	14.24	0.5606	
UCP562EL1220	14.27	0.5618	Waukesha VHP7042 - GL7042 -3711
UCP625EL1220	15.87	0.6248	Waukesha VHP7042 - GL7042 -3711
UCP630EL1520	16.00	0.6299	Caterpillar 3600
UCP631EL1520	16.03	0.6311	Caterpillar 3600
UCP632EL1520	16.05	0.6319	Caterpillar 3600
UCP790EL1320	20.07	0.7902	Waukesha AT
UCP872EL1320	22.15	0.8720	White Superior
UCP873EL1320	22.17	0.8728	White Superior
UCP874EL1320	22.20	0.8740	White Superior

Special Applications				
Application	Part #	Millimeters (00.00mm)	Inches (.0000")	Notes
EMD Locomotive	UCP1588EL12	15.88	0.625	Only use as fixed pilot in standard rollover fixture. Can use as UNIPILOT if head is lowered (tilt fixture)

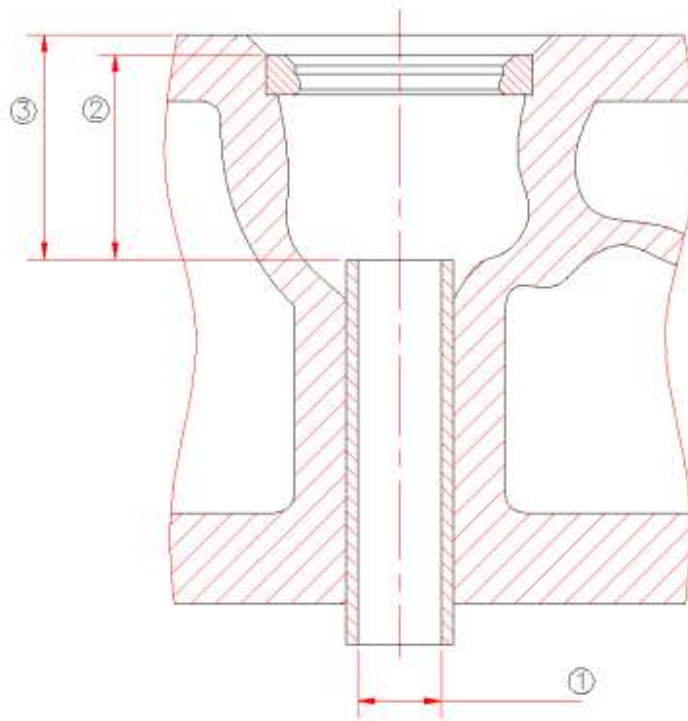


Special Pilot Order Form

Company Name: _____ Account # _____

Contact Name: _____ Phone # _____

Simply fill in the information below and contact Rottler for further ordering assistance. We will be able to select the proper shank size, pilot diameter, and overall pilot length to best suit your application. We take all the guesswork out so you get the right pilot the first time.



Valve Guide ID [A]	Distance from Top of Guide to Top of Valve Seat [B]	Distance from Top of Guide to Top of Gasket Surface [C]	Engine Make and Model