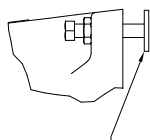
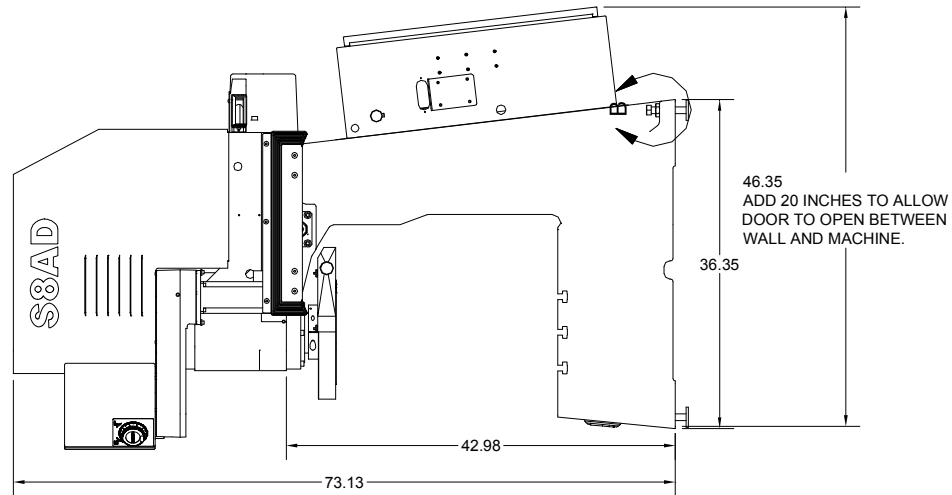


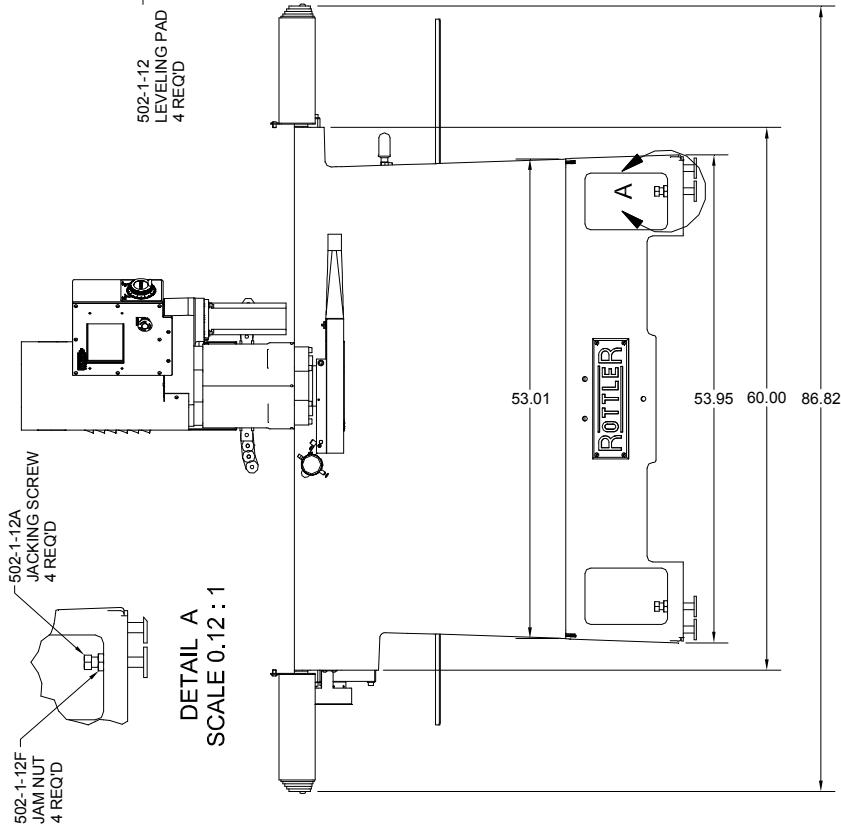
Chapter 6 Machine Parts:

Front / Right Side View S7-8AD:



502-1-12
LEVELING PAD
4 REQ'D

DETAIL B
SCALE 0.16 : 1



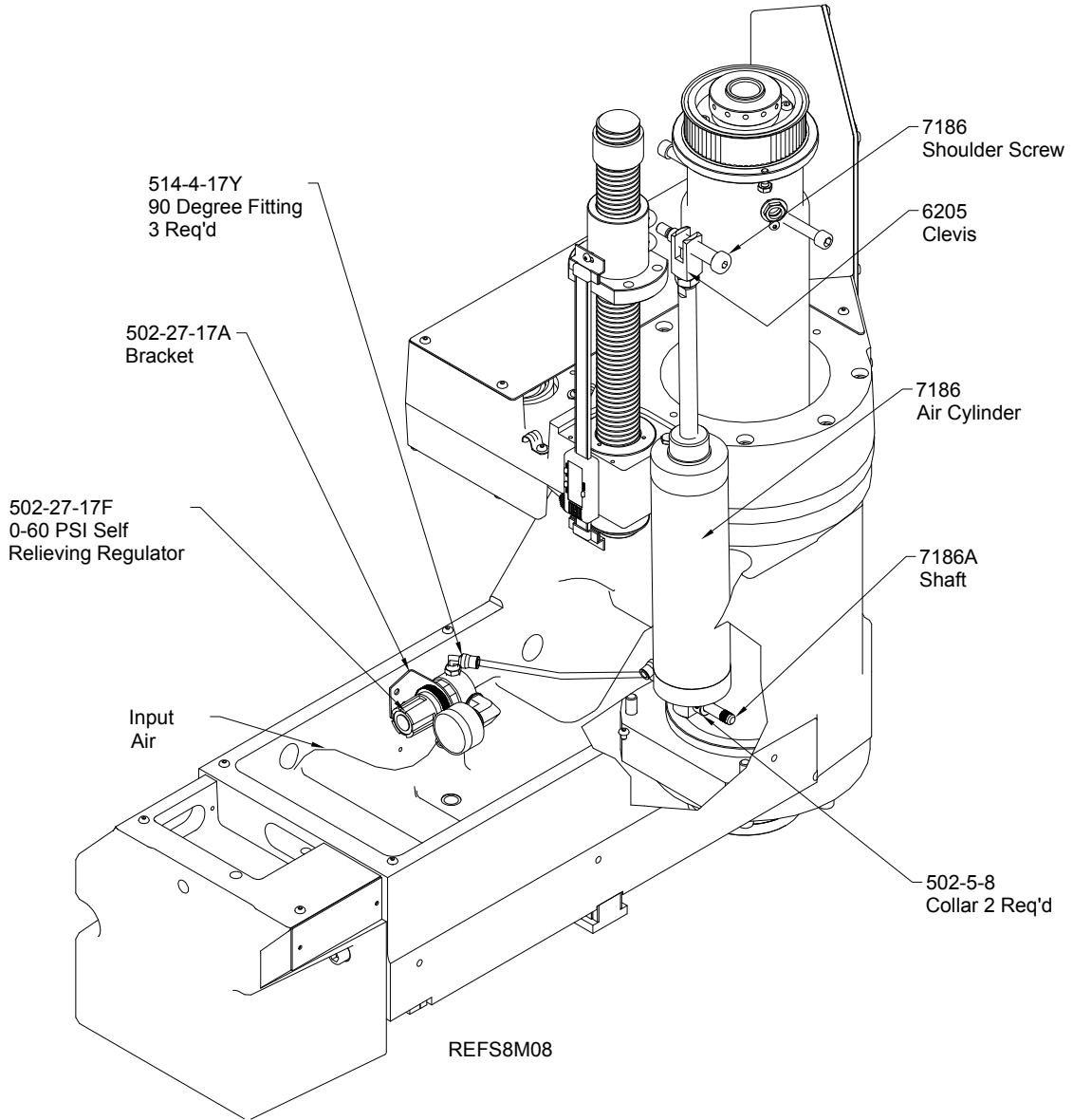
502-1-12A
JACKING SCREW
4 REQ'D

502-1-12F
JAM NUT
4 REQ'D

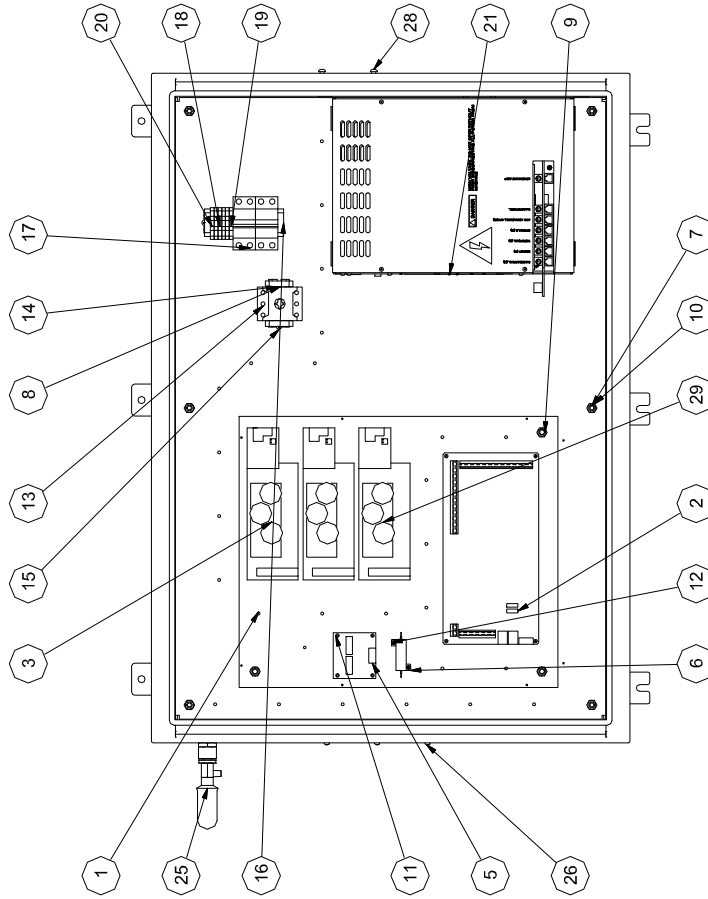
DETAIL A
SCALE 0.12 : 1

S8AD07

Pneumatic Assembly:



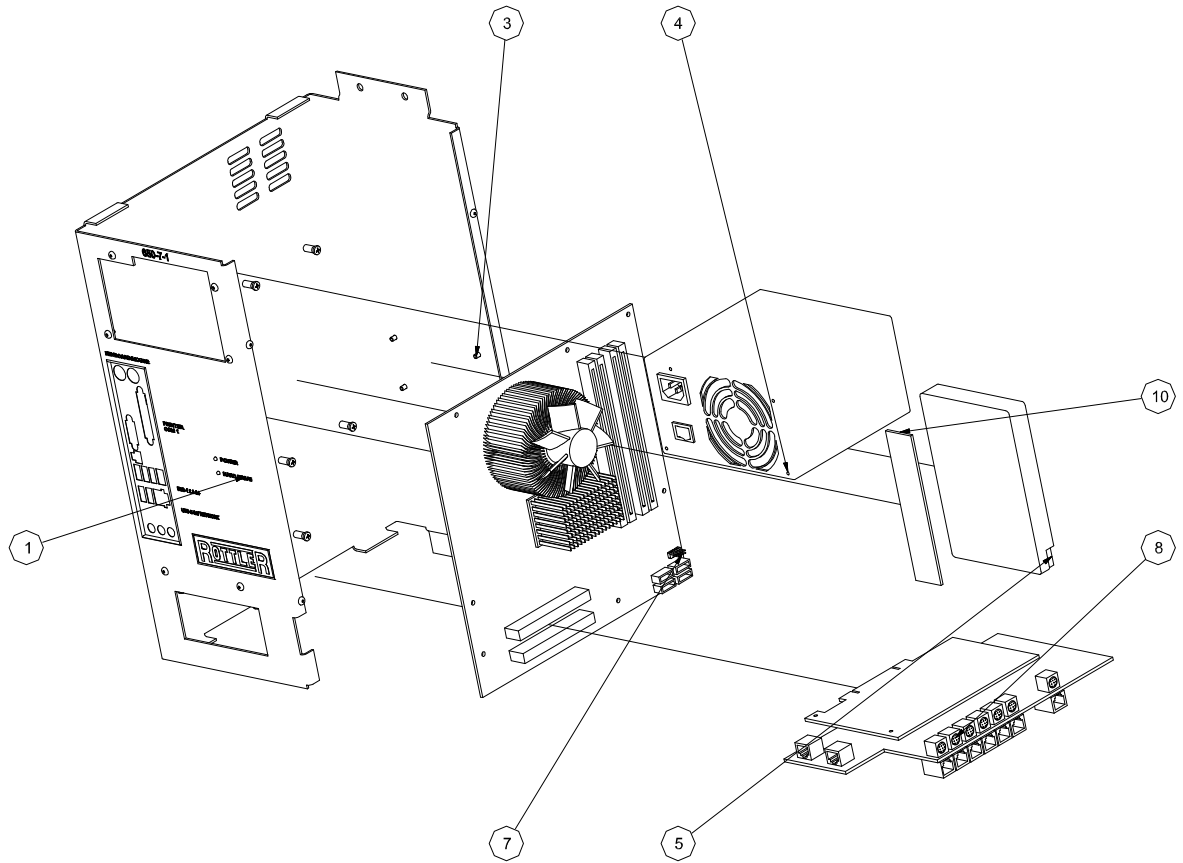
Electrical Enclosure:



Parts List			
ITEM	QTY	PART NUMBER	DESCRIPTION
1	1	650-1-29A	Heat Sink
2	1	650-1-27P	Relay Board
3	2	650-1-27N	Axis Amp
4	8	650-1-28K	Standoff
5	1	9023M	Thermal Board
6	1	6486P	Charge Resistor 100 OHM 50 Watt
7	1	650-1-29D	Rear Enclosure
8	1	650-1-29E	Electrical Panel
9	4	ANSI B18.3 - 3/8 - 16 x 2	Hexagon Socket Button Head Cap Screw
10	18	ANSI B18.2.2 - 3/8 - 16	*Varies*
11	8	ANSI B18.3 - No. 6 - 32	Hexagon Socket Head Cap Screw
12	2	ANSI B18.6.3 - No. 6 - 32 - 3/8	Cross Recessed Pan Head Machine Screw - Type I
13	1	650-5-1	Disconnect Switch 63 Amp
14	2	504-35-3F	Din Rail
15	4	ANSI B18.6.3 - No. 10 - 32 - 1/4	Cross Recessed Pan Head Machine Screw - Type I
16	4	504-35-3M	End Cap
17	2	504-35-3Q	Circuit Breaker
18	2	514-7-74C	Terminal Block, Blue
19	2	514-7-74D	Terminal Block, Grey
20	2	514-7-74E	Ground Block
21	1	650-7-1	Computer
22	1	650-1-29	Drive Cover
23	1	6488	Braking Resistor
24	2	650-1-29Q	Bracket, cable carrier SG80A
25	1	502-37-71A	EX-Air Cabinet Cooler
26	6	ANSI B18.6.3 - No. 8 - 36 - 3/8	Cross Recessed Pan Head Machine Screw - Type I
27	6	ANSI B18.6.3 - 10 - 32	Hex Machine Screw Nut
28	4	ANSI B18.3 - 1/4 - 20 x 3/8	Socket Button Head Cap Screw
29	1	650-1-28V	Spindle Amp

REFS8AD08

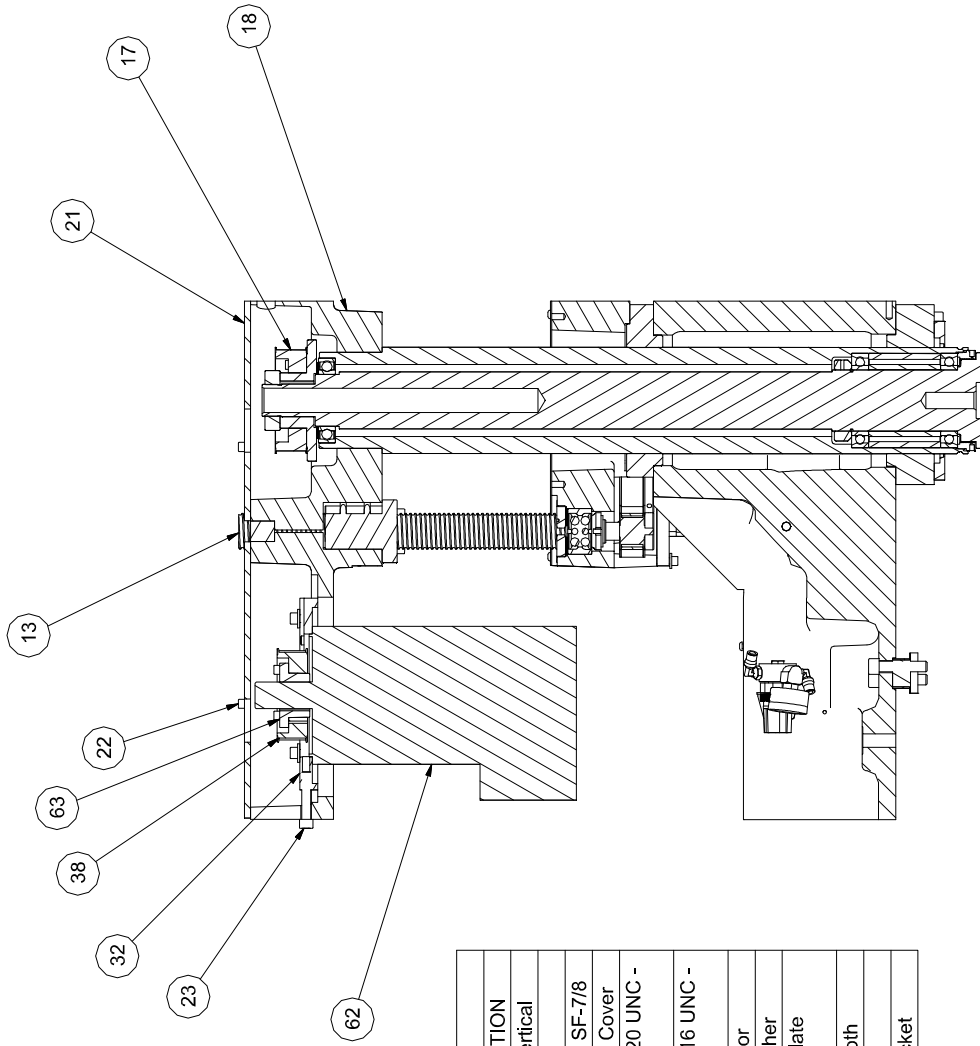
650-7-1 Computer Assembly:



Parts List			
ITEM	QTY	PART NUMBER	DESCRIPTION
1	1	650-1-27Y	Computer Case, Front
2	1	650-1-27Z	Case, Computer, Side
4	1	650-7-1C	Power Supply
5	1	650-7-1F	Hard Drive
7	1	650-6-1A	Mother Board
8	1	650-1-27Q	PCI Card
9	2	650-1-29F	Bracket, PCI Card
10	1	650-7-1B	512 Mb DDR2 RAM

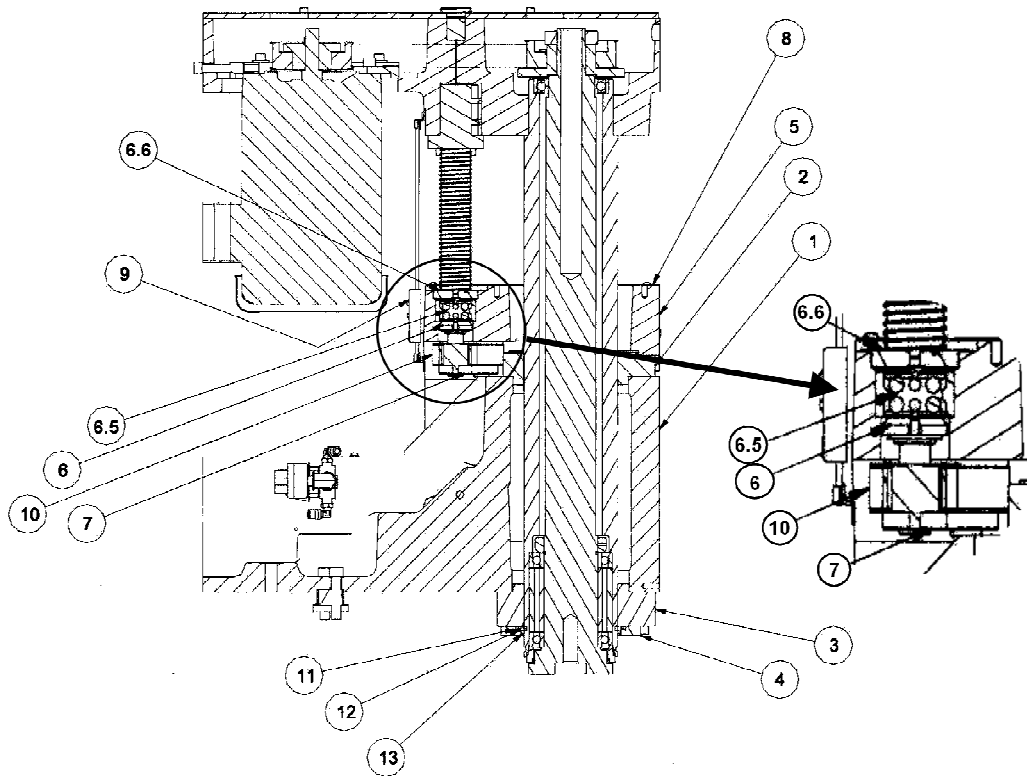
REF90Y-02092007

Upper Housing:



Parts List			
ITEM	QTY	PART NUMBER	DESCRIPTION
13	1	7244L	Ball Screw - Vertical
17	1	SF Spindle Assembly	
18	1	7247A	Upper Housing SF-7/8
21	1	7247D	Upper Housing Cover
22	4	MF-12	S.H.C.S. 1/4 - 20 UNC - 1/2
23	3	MF-34	S.H.C.S. 3/8 - 16 UNC - 2
24	1	502-37-81	Proximity Sensor
25	1	100-19	Hardened Washer
32	1	7247	Motor Mount Plate SF-7/8
38	1	7014R	Sprocket 68 tooth
62	1	504-34-87	
63	1	7014V	Bushing, Sprocket

REFS8AD09

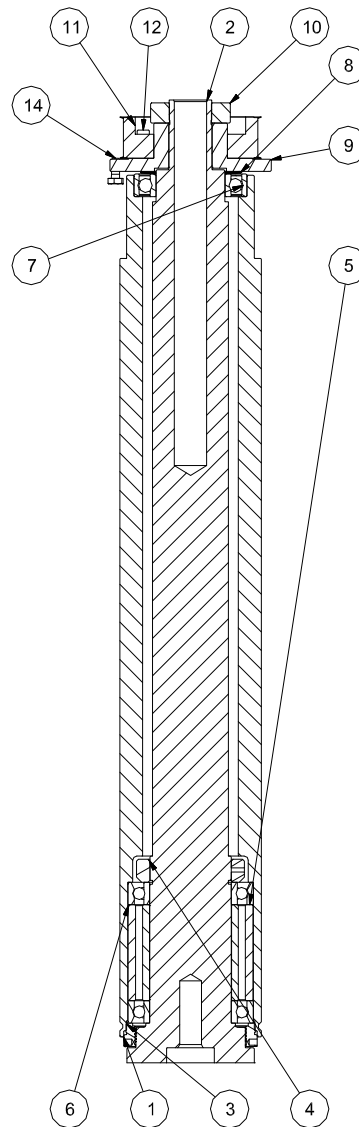
Spindle Base Front Section:

Parts List			
ITEM	QTY	PART NUMBER	DESCRIPTION
1	1	7002Z	Spindle Base SF/7&8
2	1	7246K	Bushing, Upper SF, outer spindle
3	1	7246J	Lower Bushing SF
4	1	7035	Felt Retainer
5	1	7244A	Vertical Adjustment Housing (Machining)
6	1	504-34-54	Bearing Nut
6.5	1	7245K	Bearing
6.6	1	7244K	Bearing Retainer Nut
7	4	504-34-56	Sprocket
8	1	7244J	Cover, Vertical Adjust Housing SF
9	1	Linear scale head	
10	1	504-34-59	Belt, Vertical
11	1	6251	Square Ring
12	1	6249	Felt Oiler
13	1	6248	Square Ring

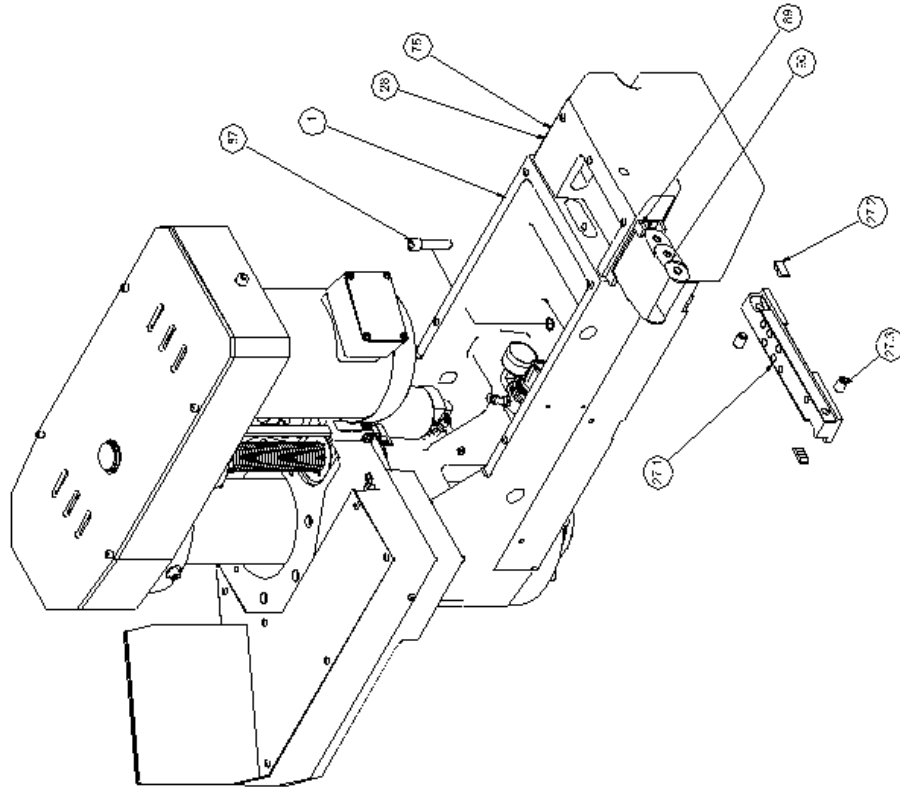
Inner / Outer Spindle Assembly:

Parts List			
ITEM	QTY	PART NUMBER	DESCRIPTION
1	1	7246D	Outer Spindle
2	1	7246E	Inner Spindle
3	1	7022	Throw Back Nut - Inner Spindle
4	1	7021A	Bearing Lock Nut
5	2	7049A	Spindle Bearing
6	1	7246H	Spacer Set (Precision) SF Spindle
7	1	7017	Bearing
8	2	7052	Bellville Spring
9	1	7246C	Index Bushing
10	1	504-34-25	Nut, Spindle Adjustment, Upper Housing
11	1	7246B	Driven Sprocket 68 Tooth
12	4	MF-15	S.H.C.S. 1/4 - 20 UNC - 1
13	1	502-9-68B	Flush Grease Fitting
14	1	ANSI/ASME B18.2.1 - 1/4-20 UNC - 0.625	HHMS

REFS8M12



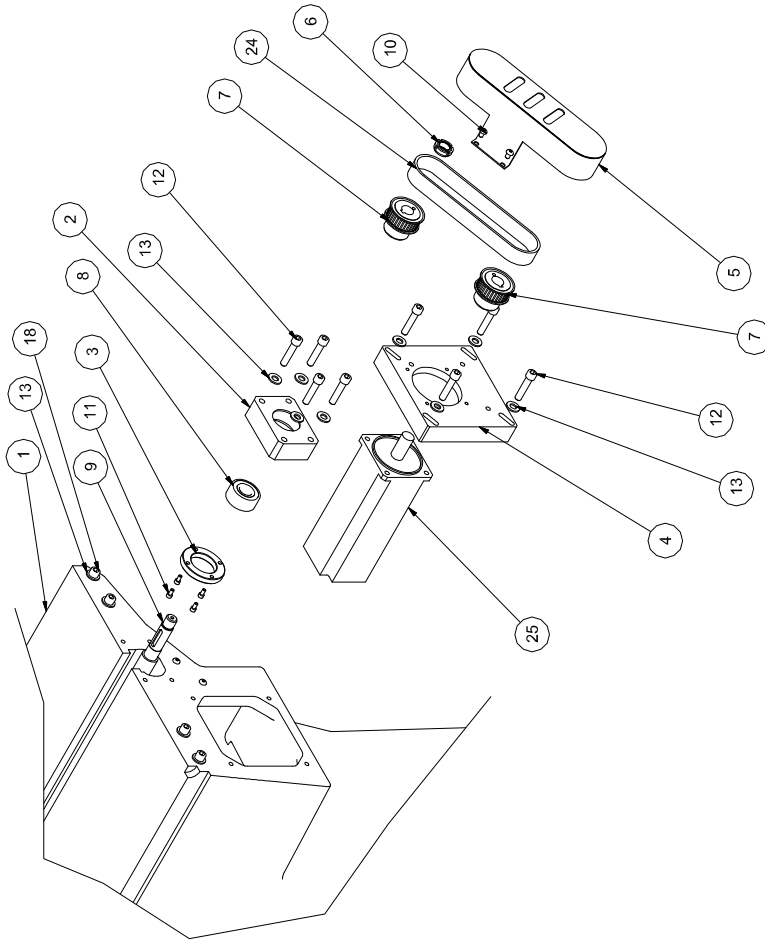
Spindle Base Assembly:



ITEM	QTY	Part No.	Description
1	1	70027	Spindle Base, S7AD
27	1	72350	Spindle Key Assembly, S7AD
27.1	1	72350.1	Spindle Key
27.2	2	72350.2	Washer
27.3	2	800-3-452	Spring Plunger
28	1	70028	Clamp Assembly, Spindle Base
75	1	850-7-1P	Essa - Cartridge
77	3	FNST 318.3 - 116 - 12	Carrier Plate
80	1	004-32-65C	Cap Screw
80	2	804 32 65C	Cap Screw

REF: 113

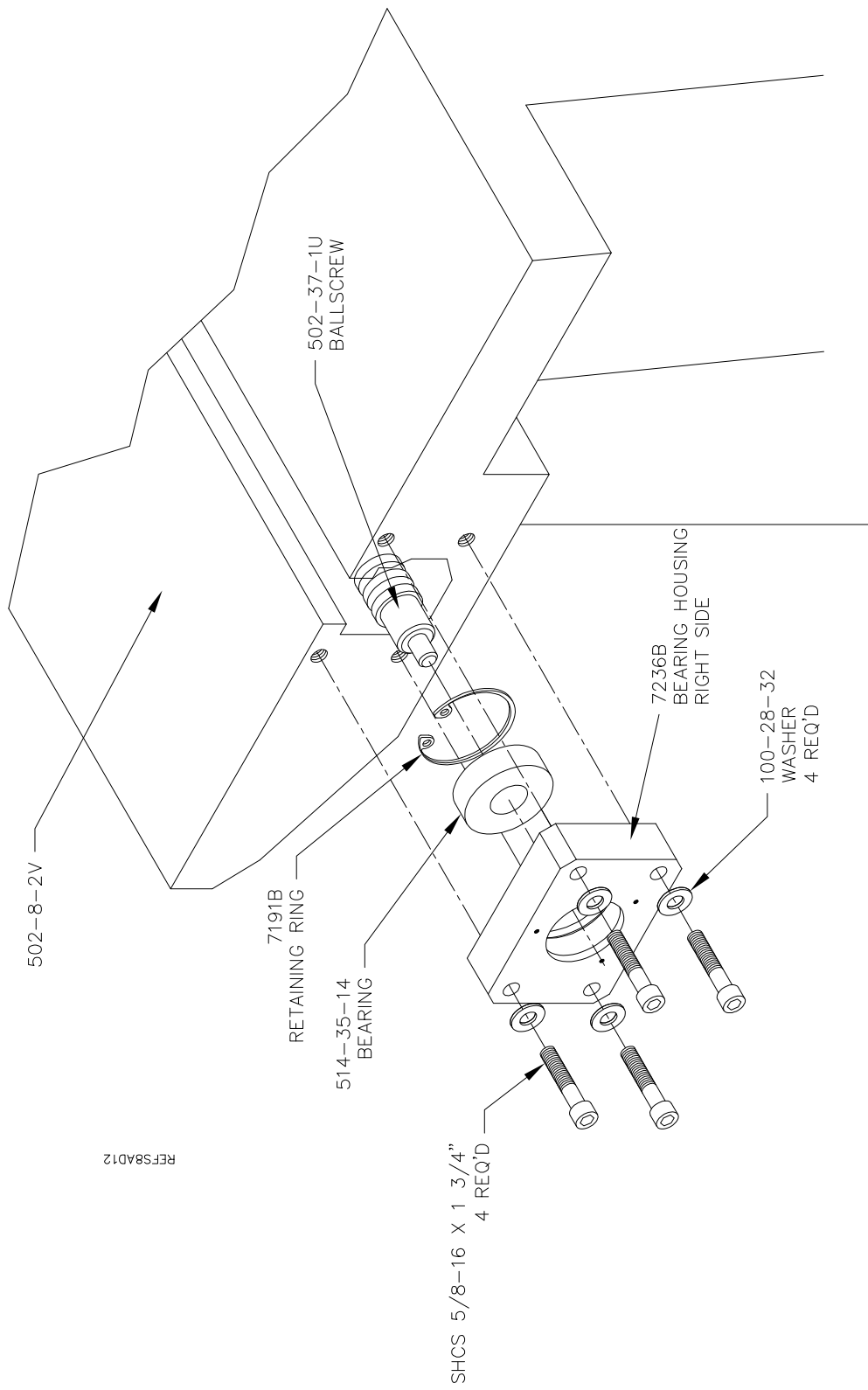
Left Ballscrew Support:



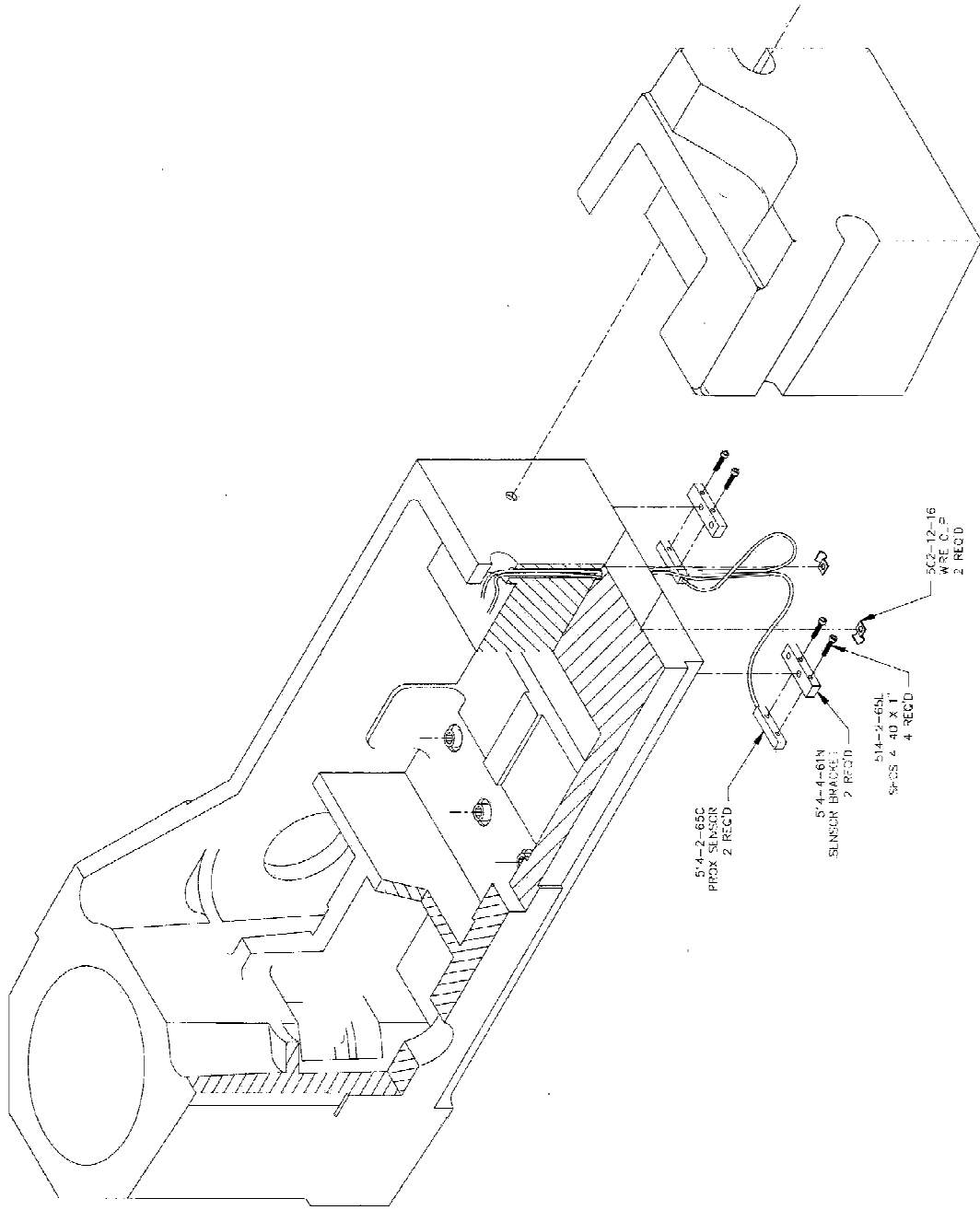
Parts List			DESCRIPTION
ITEM	QTY	PART NUMBER	
1	1	502-8-2V	Main Stand Final Machining
2	1	7237H	Bearing Housing Left Side Ball screw
3	1	7237	Bearing Retainer
4	1	7237K	Motor Mount Plate
5	1	7237C	Cover, Horizontal Belt
6	1	6777C	Lock Nut, BH-03
7	2	504-34-95B	Sprocket
8	1	500-74	
9	1	502-37-1U	Ball Screw, SF Horizontal
10	4	ANSI B18.3 - 1/4 - 20 x 3/8	Socket Button Head Cap Screw 1/4 - 20 x 3/8
11	4	MF-4	S.H.C.S. 10 - 24 UNC - 3/8
12	12	MF-33A	S.H.C.S. 3/8 - 16 UNC - 1 3/4
13	20	ASTM F436 - 3/8	Washer A
18	8	ANSI B18.3 - 3/8 - 16 UNC - 5/8	Socket Head Cap screw 3/8 - 16 UNC - 5/8
24	1	7237F	Belt, Horizontal
25	1	6481M	Motor, Horizontal S Series

REFS8AD11

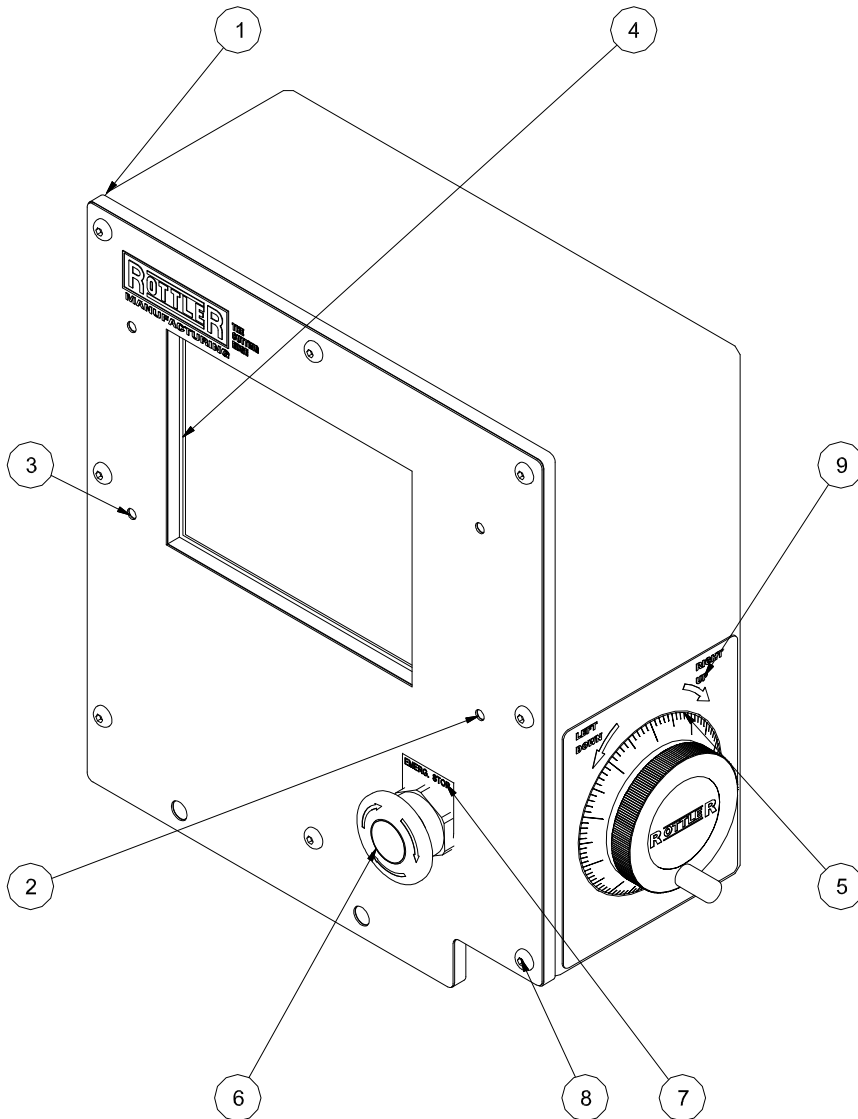
Right Ballscrew Support:



Home and Limit Switches:



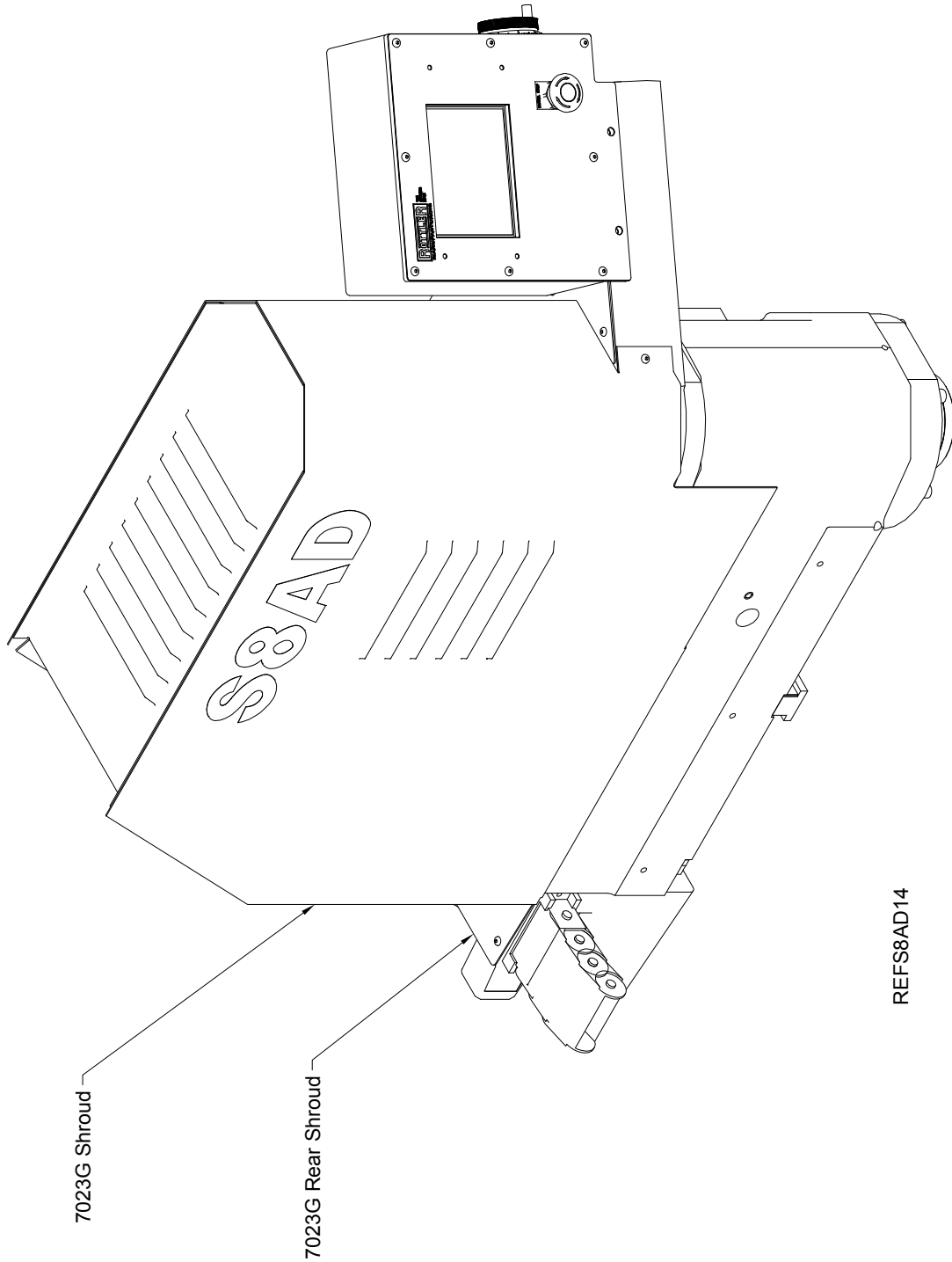
REFSTRM5 1/17/2003

Pendant Assembly:

REFS8AD13

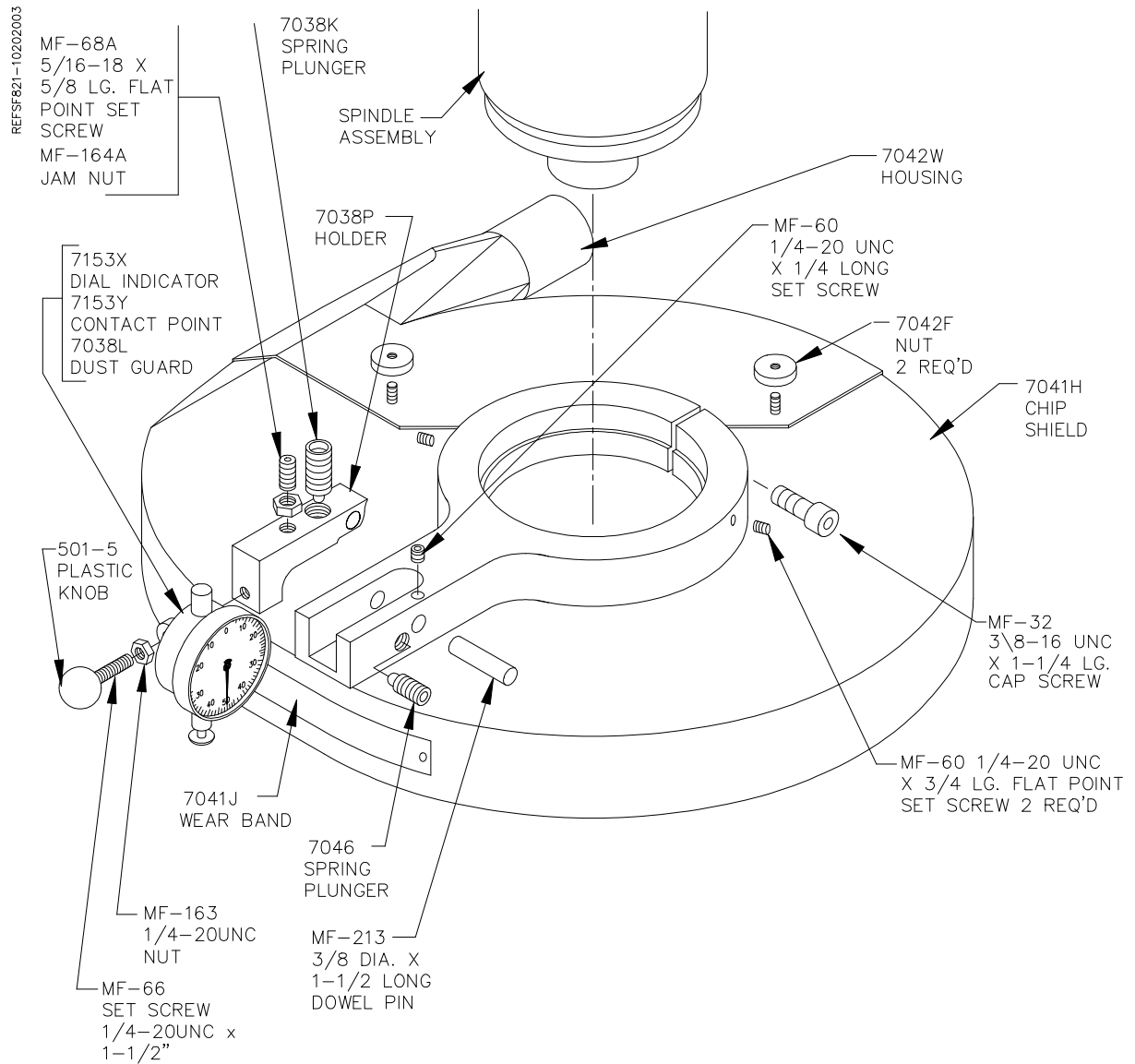
Parts List			
ITEM	QTY	PART NUMBER	DESCRIPTION
1	1	650-7-1J	Enclosure, Pendant
2	1	650-7-1K	Faceplate, Pendant
3	1	650-7-1L	Layover, Pendant Faceplate
4	1	650-7-1G	Touchscreen
5	1	6428	Electronic Handwheel
6	1	6389D	E-Stop Button
7	1	6389B	E-Stop Nameplate
8	8	Mf-88A	Socket Button Head Cap Screw 10 - 24 x 1/2
9	1	650-7-1M	Layover, Handwheel

Spindle Base:



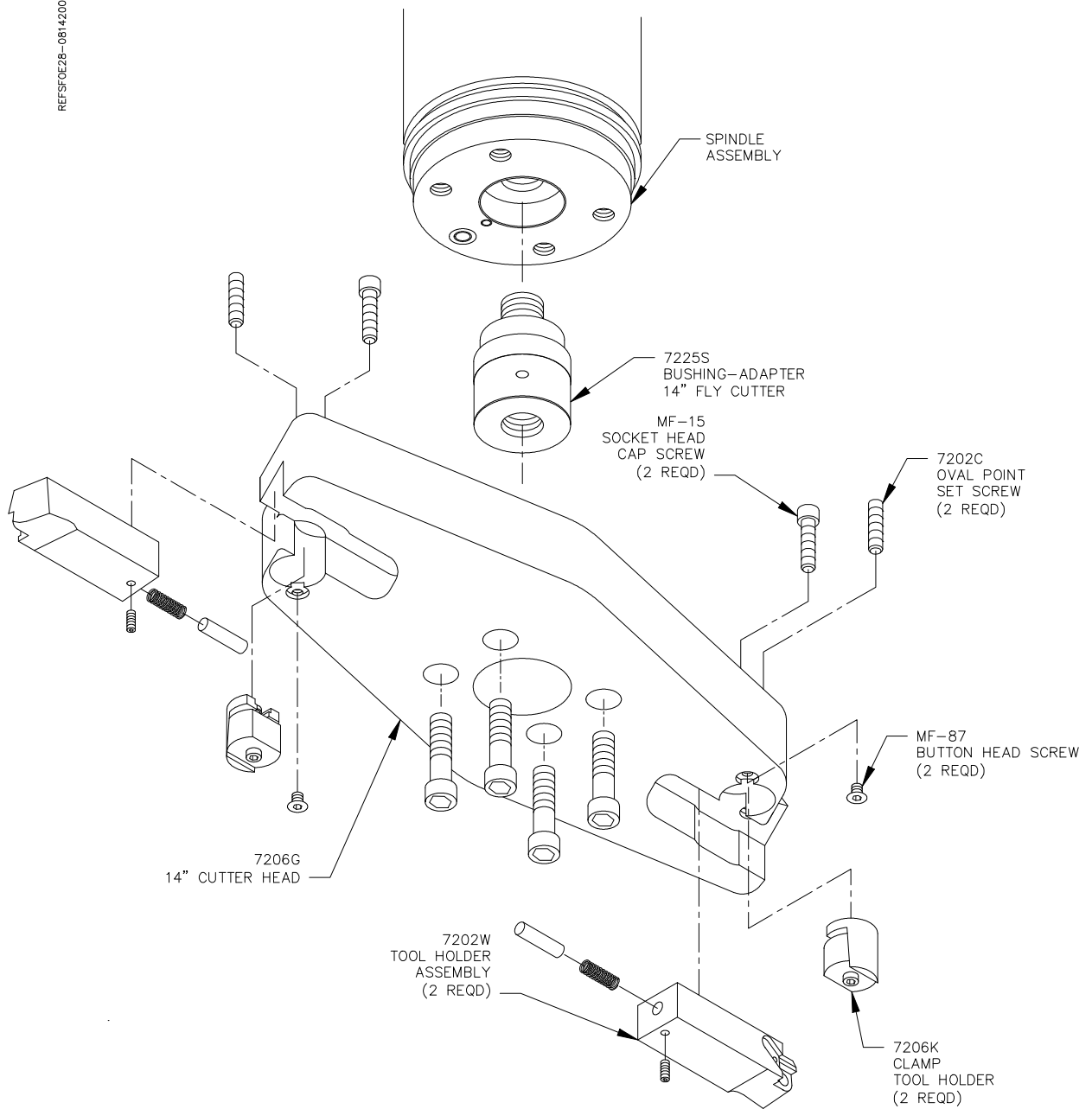
REFS8AD14

Chip Shield:



14" Fly Cutter:

REFSFOE28-08142000



Riser Set:

